

State Unemployment Soars

October 2007 to October 2008

Rank	STATE	Unemployment Rates		
		Oct. '07	Sept. '08	Oct. '08
		(Percent Unemployed)		
50	Rhode Island.....	5.1%	8.8%	9.3%
49	Michigan.....	7.5%	8.7%	9.3%
48	California.....	5.7%	7.7%	8.2%
47	South Carolina.....	6.0%	7.3%	8.0%
46	Nevada.....	5.1%	7.2%	7.6%
45	Alaska.....	6.2%	6.7%	7.4%
	District of Columbia.....	5.7%	7.0%	7.4%
44	Illinois.....	5.3%	6.9%	7.3%
43	Oregon.....	5.4%	6.4%	7.3%
42	Ohio.....	5.7%	7.2%	7.3%
41	Mississippi.....	6.3%	7.8%	7.2%
40	Florida.....	4.3%	6.6%	7.0%
39	Georgia.....	4.5%	6.4%	7.0%
38	Tennessee.....	5.0%	7.2%	7.0%
37	North Carolina.....	4.7%	6.9%	7.0%
36	Kentucky.....	5.4%	7.1%	6.8%
35	Missouri.....	5.4%	6.5%	6.5%
	US Totals.....	4.8%	6.1%	6.5%
34	Connecticut.....	4.8%	6.1%	6.5%
33	Indiana.....	4.5%	6.2%	6.4%
32	Washington.....	4.6%	5.7%	6.3%
31	Arizona.....	3.9%	5.9%	6.1%
30	Minnesota.....	4.6%	5.9%	6.0%
29	New Jersey.....	4.2%	5.8%	6.0%
28	Pennsylvania.....	4.4%	5.7%	5.8%
27	Maine.....	4.9%	5.6%	5.7%
26	Colorado.....	3.9%	5.2%	5.7%
25	New York.....	4.6%	5.8%	5.7%
24	Alabama.....	3.5%	5.3%	5.6%
23	Texas.....	4.3%	5.1%	5.6%
22	Massachusetts.....	4.3%	5.3%	5.5%
21	Louisiana.....	3.6%	5.2%	5.5%
20	Arkansas.....	5.5%	4.9%	5.4%
19	Delaware.....	3.5%	4.8%	5.4%
18	Idaho.....	2.7%	5.0%	5.3%
17	Vermont.....	3.9%	5.2%	5.2%
16	Wisconsin.....	4.8%	5.0%	5.1%
15	Maryland.....	3.6%	4.6%	5.0%
14	Kansas.....	4.0%	4.8%	4.9%
13	Montana.....	3.2%	4.6%	4.8%
12	West Virginia.....	4.7%	4.4%	4.7%
11	Hawaii.....	2.8%	4.5%	4.5%
10	New Mexico.....	3.3%	4.0%	4.4%
9	Virginia.....	3.2%	4.3%	4.4%
8	Iowa.....	3.8%	4.2%	4.4%
7	Oklahoma.....	4.3%	3.8%	4.3%
6	New Hampshire.....	3.3%	4.1%	4.1%
5	Nebraska.....	3.1%	3.6%	3.6%
4	Utah.....	2.8%	3.5%	3.5%
3	North Dakota.....	3.2%	3.6%	3.4%
2	South Dakota.....	2.9%	3.2%	3.3%
1	Wyoming.....	2.9%	3.3%	3.3%

BLS and MBG Information Services
www.MBGInfoSvcs.com All figures are seasonally adjusted.

Job Growth in the States: Undermined By Debt Crisis, Outsourcing & Imports

October 2007 to October 2008

Rank	Nonfarm Establishment Jobs STATE	Total	Const- ruction	Manuf- acturing	Trade and Utilities	Information	Finance	Prof & Bus Services	Education & Health	Leisure & Hospitality	Other Services	Govt.	Unemployment Rates		
													Oct. '07	Sept. '08	Oct. '08
(Change over Year Ago: Percent)													(Percent Unemployed)		
50	Rhode Island.....	-2.9%	-4.9%	-6.3%	-3.9%	1.9%	-4.1%	-4.1%	0.9%	-1.7%	-5.2%	-3.7%	5.1%	8.8%	9.3%
49	Arizona.....	-2.6%	-17.1%	-1.8%	-3.9%	-6.6%	-2.4%	-2.7%	3.4%	-2.4%	-2.5%	1.4%	3.9%	5.9%	6.1%
48	Florida.....	-1.9%	-13.7%	-5.3%	-2.4%	-5.0%	-2.2%	-3.5%	3.4%	1.0%	-0.1%	0.8%	4.3%	6.6%	7.0%
47	Idaho.....	-1.8%	-10.2%	-6.2%	-3.4%	3.7%	-1.5%	-3.3%	3.1%	-2.2%	2.6%	3.3%	2.7%	5.0%	5.3%
46	Michigan.....	-1.7%	-9.3%	-5.0%	-1.7%	-2.9%	-2.4%	-0.6%	2.0%	-0.3%	-1.2%	-1.6%	7.5%	8.7%	9.3%
45	Georgia.....	-1.5%	-8.4%	-4.9%	-1.2%	0.4%	-1.5%	-2.3%	2.2%	-1.0%	0.3%	-0.2%	4.5%	6.4%	7.0%
44	Oregon.....	-1.4%	-10.7%	-7.2%	-1.3%	-3.0%	-3.5%	-1.8%	5.2%	-1.1%	-0.7%	2.2%	5.4%	6.4%	7.3%
43	Mississippi.....	-1.3%	-0.5%	-4.5%	-1.0%	-0.8%	0.4%	-0.6%	1.4%	-4.3%	2.5%	-0.9%	6.3%	7.8%	7.2%
42	South Carolina.....	-1.1%	-14.2%	-3.4%	-1.5%	-1.8%	1.2%	-2.4%	2.2%	0.3%	1.6%	3.0%	6.0%	7.3%	8.0%
41	Indiana.....	-1.1%	-1.7%	-4.8%	-0.9%	0.0%	0.4%	-1.5%	0.8%	0.2%	-0.1%	0.6%	4.5%	6.2%	6.4%
40	Wisconsin.....	-0.9%	-4.2%	-3.3%	-1.1%	-1.0%	0.3%	-1.5%	1.7%	-2.8%	-0.7%	1.6%	4.8%	5.0%	5.1%
	US Totals.....	-0.8%	-6.7%	-3.7%	-1.6%	-1.6%	-1.5%	-1.7%	2.8%	-0.0%	-2.2%	1.1%	4.8%	6.1%	6.5%
39	Tennessee.....	-0.8%	-0.8%	-2.9%	-0.5%	-0.6%	-1.8%	-2.0%	1.8%	-2.4%	0.7%	0.5%	5.0%	7.2%	7.0%
38	Kentucky.....	-0.7%	-4.9%	-6.1%	0.6%	-2.0%	-1.3%	-1.2%	0.1%	-1.6%	0.1%	3.0%	5.4%	7.1%	6.8%
37	California.....	-0.7%	-7.5%	-2.2%	-1.3%	-0.3%	-3.6%	-0.3%	3.1%	0.5%	-0.7%	0.6%	5.7%	7.7%	8.2%
36	Maine.....	-0.7%	-5.9%	-1.0%	-1.9%	-2.7%	-2.4%	3.3%	1.4%	-0.8%	-0.5%	-0.6%	4.9%	5.6%	5.7%
35	Washington.....	-0.6%	-5.5%	-8.1%	-0.2%	2.4%	-1.9%	0.9%	1.2%	1.0%	0.9%	1.6%	4.6%	5.7%	6.3%
34	Minnesota.....	-0.6%	-5.3%	-2.7%	-0.8%	-2.3%	1.6%	-2.2%	1.6%	-0.3%	-1.1%	1.0%	4.6%	5.9%	6.0%
33	Missouri.....	-0.5%	-1.8%	-3.6%	-0.3%	-1.9%	-2.4%	-0.1%	1.9%	-1.1%	-0.9%	0.8%	5.4%	6.5%	6.5%
32	Nevada.....	-0.5%	-11.3%	-1.6%	1.1%	0.6%	-4.0%	-1.0%	3.5%	0.4%	1.6%	3.6%	5.1%	7.2%	7.6%
31	North Carolina.....	-0.5%	-0.2%	-4.7%	-0.6%	-0.1%	0.0%	-2.3%	4.1%	1.1%	-4.1%	0.5%	4.7%	6.9%	7.0%
30	New Jersey.....	-0.4%	-2.7%	-4.1%	-0.6%	0.3%	-3.0%	0.9%	1.6%	-1.0%	0.8%	-0.1%	4.2%	5.8%	6.0%
29	Ohio.....	-0.3%	-3.6%	-1.6%	-0.5%	-1.0%	-0.3%	0.1%	1.1%	0.6%	-0.7%	-0.2%	5.7%	7.2%	7.3%
28	Illinois.....	-0.3%	-5.4%	-0.3%	0.4%	-1.9%	-2.3%	0.9%	0.7%	-0.3%	-1.1%	-0.6%	5.3%	6.9%	7.3%
27	Hawaii.....	-0.3%	-3.0%	0.0%	-2.9%	-0.9%	-1.3%	0.0%	2.3%	-2.3%	2.2%	2.8%	2.8%	4.5%	4.5%
26	Vermont.....	-0.3%	-5.1%	-1.9%	-0.7%	-1.7%	-0.8%	0.4%	1.6%	0.3%	-1.0%	0.5%	3.9%	5.2%	5.2%
25	Pennsylvania.....	-0.3%	-2.6%	-3.4%	-1.4%	-2.3%	-1.1%	0.7%	2.0%	0.7%	-0.5%	0.7%	4.4%	5.7%	5.8%
24	Connecticut.....	-0.2%	-2.4%	-1.4%	-0.7%	-1.0%	-1.0%	-0.7%	1.7%	0.4%	-1.1%	0.6%	4.8%	6.1%	6.5%
23	Alabama.....	-0.1%	-1.6%	-3.3%	-0.3%	0.4%	0.2%	1.9%	-0.0%	0.3%	-0.1%	1.3%	3.5%	5.3%	5.6%
22	New York.....	-0.0%	-0.5%	-3.2%	-0.7%	-0.1%	-2.3%	-0.5%	1.8%	0.7%	0.9%	0.7%	4.6%	5.8%	5.7%
21	Delaware.....	-0.0%	-6.0%	-1.2%	-0.6%	4.4%	0.2%	-2.7%	2.9%	-0.5%	3.9%	2.3%	3.5%	4.8%	5.4%
20	Utah.....	-0.0%	-13.9%	-1.4%	1.0%	-1.2%	-1.1%	1.8%	4.0%	1.3%	-0.6%	2.0%	2.8%	3.5%	3.5%
19	Arkansas.....	0.0%	-0.4%	-3.1%	-0.1%	0.0%	0.2%	0.8%	2.4%	1.1%	0.9%	-0.1%	5.5%	4.9%	5.4%
18	New Mexico.....	0.1%	-2.3%	-6.7%	0.8%	0.6%	-2.0%	-1.5%	3.9%	-1.6%	0.3%	1.0%	3.3%	4.0%	4.4%
17	Massachusetts.....	0.1%	-4.3%	-1.5%	-0.8%	-0.3%	-1.3%	1.2%	2.0%	-0.2%	-0.5%	1.2%	4.3%	5.3%	5.5%
16	West Virginia.....	0.2%	-1.0%	-3.2%	-1.8%	-2.6%	-2.3%	0.7%	1.1%	1.9%	1.6%	0.7%	4.7%	4.4%	4.7%
15	Iowa.....	0.4%	-1.2%	-1.2%	0.6%	-0.3%	0.2%	-0.1%	1.7%	1.2%	-0.2%	1.1%	3.8%	4.2%	4.4%
14	Colorado.....	0.5%	-3.6%	-2.3%	0.2%	0.3%	-1.6%	-0.6%	3.6%	0.8%	1.8%	2.3%	3.9%	5.2%	5.7%
13	Louisiana.....	0.5%	2.3%	-2.6%	0.5%	1.1%	1.2%	0.0%	1.4%	1.0%	0.4%	0.3%	3.6%	5.2%	5.5%
12	Virginia.....	0.5%	-2.8%	-0.6%	-0.4%	-1.0%	-0.9%	1.2%	2.6%	-0.7%	2.4%	1.9%	3.2%	4.3%	4.4%
11	New Hampshire.....	0.5%	-3.4%	-1.5%	1.1%	-0.8%	0.5%	3.0%	2.4%	-1.4%	2.7%	0.0%	3.3%	4.1%	4.1%
10	Kansas.....	0.6%	-1.0%	-0.5%	-0.4%	1.0%	-0.7%	1.0%	0.8%	0.1%	0.0%	3.0%	4.0%	4.8%	4.9%
9	Alaska.....	0.7%	-1.6%	-1.8%	0.2%	1.4%	-2.0%	2.8%	1.6%	-0.7%	-0.9%	1.1%	6.2%	6.7%	7.4%
8	Nebraska.....	0.7%	1.0%	-1.3%	-0.5%	-3.1%	2.8%	2.6%	2.8%	1.6%	0.3%	-0.4%	3.1%	3.6%	3.6%
7	Oklahoma.....	0.8%	4.1%	0.9%	0.6%	-0.7%	0.2%	-0.2%	0.8%	1.1%	-1.4%	-0.4%	4.3%	3.8%	4.3%
6	Maryland.....	0.9%	-1.9%	-3.6%	0.1%	-0.4%	-1.0%	1.8%	2.5%	2.6%	2.2%	1.4%	3.6%	4.6%	5.0%
5	Montana.....	1.2%	-5.2%	1.5%	0.1%	0.0%	-0.5%	-0.2%	2.0%	2.8%	4.1%	4.0%	3.2%	4.6%	4.8%
4	South Dakota.....	1.2%	1.2%	2.6%	-0.2%	-1.4%	1.6%	1.5%	3.8%	0.7%	-0.6%	0.5%	2.9%	3.2%	3.3%
3	North Dakota.....	1.2%	2.9%	-0.8%	2.2%	-1.3%	-0.5%	1.7%	1.0%	0.3%	2.0%	0.8%	3.2%	3.6%	3.4%
	District of Columbia..	1.5%	2.3%	-5.9%	2.2%	-1.4%	-1.4%	1.1%	4.3%	0.4%	4.9%	0.5%	5.7%	7.0%	7.4%
2	Texas.....	2.2%	2.5%	-1.1%	1.6%	-1.2%	1.0%	4.7%	2.7%	3.5%	1.6%	1.9%	4.3%	5.1%	5.6%
1	Wyoming.....	3.2%	1.4%	-1.9%	1.6%	2.5%	2.6%	3.2%	4.3%	3.7%	7.0%	3.8%	2.9%	3.3%	3.3%

Recent Job Growth and Decline in the States

Rank	STATE	1,000s of Nonfarm Jobs			One Month		Two Months	
		August	September	October	Sept-Oct Change		Aug-Oct Change	
50	Washington.....	2,971.3	2,958.3	2,929.0	-29.3	-1.0%	-42.3	-1.4%
49	Arizona.....	2,624.7	2,611.3	2,593.6	-17.7	-0.7%	-31.1	-1.2%
48	South Carolina.....	1,960.8	1,940.5	1,938.3	-2.2	-0.1%	-22.5	-1.1%
47	Idaho.....	653.9	648.9	646.4	-2.5	-0.4%	-7.5	-1.1%
46	Michigan.....	4,199.9	4,173.2	4,153.6	-19.6	-0.5%	-46.3	-1.1%
45	Oregon.....	1,729.4	1,725.0	1,710.9	-14.1	-0.8%	-18.5	-1.1%
	District of Columbia.....	716.3	707.7	709.2	1.5	0.2%	-7.1	-1.0%
44	Mississippi.....	1,149.1	1,145.5	1,138.6	-6.9	-0.6%	-10.5	-0.9%
43	Kentucky.....	1,877.4	1,865.5	1,862.1	-3.4	-0.2%	-15.3	-0.8%
42	Rhode Island.....	479.5	478.4	476.0	-2.4	-0.5%	-3.5	-0.7%
41	Wisconsin.....	2,874.4	2,855.8	2,856.0	0.2	0.0%	-18.4	-0.6%
40	South Dakota.....	415.4	414.9	413.0	-1.9	-0.5%	-2.4	-0.6%
39	Hawaii.....	624.9	622.2	621.3	-0.9	-0.1%	-3.6	-0.6%
38	Louisiana.....	1,956.8	1,940.7	1,945.7	5.0	0.3%	-11.1	-0.6%
37	Georgia.....	4,115.1	4,097.5	4,092.4	-5.1	-0.1%	-22.7	-0.6%
36	Indiana.....	2,978.1	2,967.2	2,962.5	-4.7	-0.2%	-15.6	-0.5%
35	Colorado.....	2,367.9	2,366.2	2,355.6	-10.6	-0.4%	-12.3	-0.5%
34	Alaska.....	319.4	318.8	317.8	-1.0	-0.3%	-1.6	-0.5%
33	North Carolina.....	4,168.2	4,153.6	4,148.2	-5.4	-0.1%	-20.0	-0.5%
32	Florida.....	7,909.9	7,903.1	7,875.8	-27.3	-0.3%	-34.1	-0.4%
31	Montana.....	451.7	449.0	449.9	0.9	0.2%	-1.8	-0.4%
	US Totals.....	137,423	137,139	136,899	-240	-0.2%	-524	-0.4%
30	Nevada.....	1,284.4	1,280.2	1,279.8	-0.4	-0.0%	-4.6	-0.4%
29	Maine.....	616.1	614.8	613.9	-0.9	-0.1%	-2.2	-0.4%
28	Connecticut.....	1,704.7	1,702.4	1,698.8	-3.6	-0.2%	-5.9	-0.3%
27	Tennessee.....	2,785.6	2,782.5	2,776.6	-5.9	-0.2%	-9.0	-0.3%
26	Massachusetts.....	3,294.3	3,291.2	3,284.2	-7.0	-0.2%	-10.1	-0.3%
25	Pennsylvania.....	5,801.6	5,791.3	5,784.0	-7.3	-0.1%	-17.6	-0.3%
24	Minnesota.....	2,766.3	2,765.5	2,758.0	-7.5	-0.3%	-8.3	-0.3%
23	Utah.....	1,258.4	1,255.2	1,255.0	-0.2	-0.0%	-3.4	-0.3%
22	Illinois.....	5,974.4	5,970.1	5,958.4	-11.7	-0.2%	-16.0	-0.3%
21	New Mexico.....	848.4	846.5	846.3	-0.2	-0.0%	-2.1	-0.2%
20	California.....	15,104.0	15,093.1	15,066.7	-26.4	-0.2%	-37.3	-0.2%
19	New Jersey.....	4,065.4	4,061.4	4,055.4	-6.0	-0.1%	-10.0	-0.2%
18	Alabama.....	2,013.6	2,011.3	2,008.9	-2.4	-0.1%	-4.7	-0.2%
17	Delaware.....	438.2	437.6	437.2	-0.4	-0.1%	-1.0	-0.2%
16	Ohio.....	5,405.7	5,402.6	5,393.6	-9.0	-0.2%	-12.1	-0.2%
15	New York.....	8,775.7	8,772.7	8,759.3	-13.4	-0.2%	-16.4	-0.2%
14	Maryland.....	2,640.6	2,637.8	2,636.2	-1.6	-0.1%	-4.4	-0.2%
13	Iowa.....	1,526.3	1,525.7	1,524.0	-1.7	-0.1%	-2.3	-0.2%
12	Oklahoma.....	1,587.0	1,587.1	1,585.2	-1.9	-0.1%	-1.8	-0.1%
11	Nebraska.....	976.4	978.9	975.4	-3.5	-0.4%	-1.0	-0.1%
10	Virginia.....	3,781.5	3,784.6	3,778.6	-6.0	-0.2%	-2.9	-0.1%
9	New Hampshire.....	657.0	656.9	656.7	-0.2	-0.0%	-0.3	-0.0%
8	Kansas.....	1,391.2	1,390.2	1,391.6	1.4	0.1%	0.4	0.0%
7	Arkansas.....	1,204.6	1,206.3	1,205.4	-0.9	-0.1%	0.8	0.1%
6	Vermont.....	306.7	306.6	307.1	0.5	0.2%	0.4	0.1%
5	Texas.....	10,646.6	10,642.9	10,665.9	23.0	0.2%	19.3	0.2%
4	North Dakota.....	362.6	362.8	363.3	0.5	0.1%	0.7	0.2%
3	West Virginia.....	757.5	758.7	759.1	0.4	0.1%	1.6	0.2%
2	Missouri.....	2,783.8	2,784.6	2,789.9	5.3	0.2%	6.1	0.2%
1	Wyoming.....	296.5	299.2	300.1	0.9	0.3%	3.6	1.2%

Department of Labor, BLS and MBG Information Services

www.MBGInfoSvc.com

All state jobs figures are seasonally adjusted by the BLS.

Construction Job Growth/Decline in the States

Rank	STATE	1,000s of Construction Jobs			One Month		Two Months	
		August	September	October	Sept-Oct Change		Aug-Oct Change	
50	Arizona.....	188.1	185.2	180.6	-4.6	-2.5%	-7.5	-4.0%
49	Nevada.....	119.9	117.7	115.2	-2.5	-2.1%	-4.7	-3.9%
48	Georgia.....	208.3	203.4	200.6	-2.8	-1.4%	-7.7	-3.7%
47	Kentucky.....	84.8	84.3	81.9	-2.4	-2.8%	-2.9	-3.4%
46	Idaho.....	47.7	47.6	46.3	-1.3	-2.7%	-1.4	-2.9%
45	Illinois.....	262.0	258.6	254.5	-4.1	-1.6%	-7.5	-2.9%
44	Rhode Island.....	21.0	20.8	20.4	-0.4	-1.9%	-0.6	-2.9%
43	Hawaii.....	39.3	38.7	38.2	-0.5	-1.3%	-1.1	-2.8%
42	Washington.....	200.5	198.0	195.5	-2.5	-1.3%	-5.0	-2.5%
41	Massachusetts.....	134.8	133.9	131.6	-2.3	-1.7%	-3.2	-2.4%
40	Wisconsin.....	122.3	120.4	119.5	-0.9	-0.7%	-2.8	-2.3%
39	Kansas.....	66.6	66.0	65.1	-0.9	-1.4%	-1.5	-2.3%
38	Montana.....	31.5	30.5	30.8	0.3	1.0%	-0.7	-2.2%
37	Florida.....	512.1	509.5	501.1	-8.4	-1.6%	-11.0	-2.1%
36	Oregon.....	93.8	93.0	91.9	-1.1	-1.2%	-1.9	-2.0%
35	Minnesota.....	113.6	113.2	111.3	-1.9	-1.7%	-2.3	-2.0%
34	Wyoming.....	27.7	27.1	27.2	0.1	0.4%	-0.5	-1.8%
33	Maine.....	29.4	29.6	28.9	-0.7	-2.4%	-0.5	-1.7%
32	Colorado.....	164.1	163.2	161.5	-1.7	-1.0%	-2.6	-1.6%
31	Michigan.....	149.1	149.1	146.8	-2.3	-1.5%	-2.3	-1.5%
30	Utah.....	90.7	90.6	89.4	-1.2	-1.3%	-1.3	-1.4%
29	New Mexico.....	58.2	57.6	57.4	-0.2	-0.3%	-0.8	-1.4%
28	Virginia.....	234.6	233.1	231.4	-1.7	-0.7%	-3.2	-1.4%
27	Alabama.....	113.5	112.7	112.0	-0.7	-0.6%	-1.5	-1.3%
26	Maryland.....	188.4	187.2	186.0	-1.2	-0.6%	-2.4	-1.3%
25	Vermont.....	16.0	15.9	15.8	-0.1	-0.6%	-0.2	-1.3%
	US Totals.....	7,153	7,118	7,069	-49	-0.7%	-84	-1.2%
24	Missouri.....	146.9	145.2	145.7	0.5	0.3%	-1.2	-0.8%
23	Delaware.....	26.3	25.9	26.1	0.2	0.8%	-0.2	-0.8%
22	Connecticut.....	68.0	67.7	67.5	-0.2	-0.3%	-0.5	-0.7%
21	Ohio.....	217.8	218.2	216.2	-2.0	-0.9%	-1.6	-0.7%
20	New Hampshire.....	27.7	27.7	27.5	-0.2	-0.7%	-0.2	-0.7%
19	California.....	808.4	805.0	802.6	-2.4	-0.3%	-5.8	-0.7%
18	Pennsylvania.....	257.3	256.2	256.0	-0.2	-0.1%	-1.3	-0.5%
17	Texas.....	671.9	669.9	668.7	-1.2	-0.2%	-3.2	-0.5%
16	New Jersey.....	167.0	166.5	166.3	-0.2	-0.1%	-0.7	-0.4%
15	South Dakota.....	23.9	23.8	23.8	0.0	0.0%	-0.1	-0.4%
14	Indiana.....	149.7	149.7	149.3	-0.4	-0.3%	-0.4	-0.3%
13	Tennessee.....	138.0	137.4	137.7	0.3	0.2%	-0.3	-0.2%
12	Arkansas.....	55.6	55.9	55.5	-0.4	-0.7%	-0.1	-0.2%
11	Mississippi.....	57.9	57.3	57.8	0.5	0.9%	-0.1	-0.2%
10	Louisiana.....	139.2	137.5	139.1	1.6	1.2%	-0.1	-0.1%
9	Iowa.....	72.3	72.3	72.3	0.0	0.0%	0.0	0.0%
8	New York.....	349.8	350.2	350.0	-0.2	-0.1%	0.2	0.1%
7	North Carolina.....	254.5	252.9	255.0	2.1	0.8%	0.5	0.2%
6	South Carolina.....	111.4	110.8	111.7	0.9	0.8%	0.3	0.3%
5	Nebraska.....	51.5	51.5	51.7	0.2	0.4%	0.2	0.4%
	District of Columbia.....	12.9	13.1	13.0	-0.1	-0.8%	0.1	0.8%
4	West Virginia.....	37.6	37.8	37.9	0.1	0.3%	0.3	0.8%
3	North Dakota.....	19.7	19.7	19.9	0.2	1.0%	0.2	1.0%
2	Oklahoma.....	74.0	74.9	75.2	0.3	0.4%	1.2	1.6%
1	Alaska.....	16.6	17.0	17.1	0.1	0.6%	0.5	3.0%

Manufacturing Job Growth/Decline in the States

Rank	STATE	1,000s of Manufacturing Jobs			One Month		Two Months	
		August	September	October	Sept-Oct Change		Aug-Oct Change	
50	Washington.....	298.5	297.6	271.5	-26.1	-8.8%	-27.0	-9.0%
49	Kentucky.....	245.4	242.8	238.4	-4.4	-1.8%	-7.0	-2.9%
48	Oregon.....	193.4	192.7	188.2	-4.5	-2.3%	-5.2	-2.7%
47	Indiana.....	530.6	525.6	520.1	-5.5	-1.0%	-10.5	-2.0%
46	New Hampshire.....	77.8	76.9	76.6	-0.3	-0.4%	-1.2	-1.5%
45	Michigan.....	574.7	569.3	566.2	-3.1	-0.5%	-8.5	-1.5%
44	Mississippi.....	162.8	162.8	160.4	-2.4	-1.5%	-2.4	-1.5%
43	Louisiana.....	157.0	155.5	154.8	-0.7	-0.5%	-2.2	-1.4%
42	South Carolina.....	243.6	241.6	240.2	-1.4	-0.6%	-3.4	-1.4%
41	Wisconsin.....	488.1	483.5	481.3	-2.2	-0.5%	-6.8	-1.4%
40	Nevada.....	50.4	50.1	49.7	-0.4	-0.8%	-0.7	-1.4%
39	Rhode Island.....	47.6	47.5	47.0	-0.5	-1.1%	-0.6	-1.3%
38	New Jersey.....	301.6	299.9	297.9	-2.0	-0.7%	-3.7	-1.2%
37	North Carolina.....	517.4	515.4	511.1	-4.3	-0.8%	-6.3	-1.2%
36	Pennsylvania.....	638.2	635.0	631.0	-4.0	-0.6%	-7.2	-1.1%
	US Totals.....	13,426	13,370	13,280	-90	-0.7%	-146	-1.1%
35	West Virginia.....	57.3	56.8	56.7	-0.1	-0.2%	-0.6	-1.0%
34	Maryland.....	127.8	127.2	126.5	-0.7	-0.6%	-1.3	-1.0%
33	South Dakota.....	43.5	43.2	43.1	-0.1	-0.2%	-0.4	-0.9%
32	Maine.....	58.7	58.5	58.2	-0.3	-0.5%	-0.5	-0.9%
31	Tennessee.....	369.4	368.3	366.3	-2.0	-0.5%	-3.1	-0.8%
30	Utah.....	127.3	126.4	126.3	-0.1	-0.1%	-1.0	-0.8%
29	Minnesota.....	331.9	331.4	329.4	-2.0	-0.6%	-2.5	-0.8%
28	Colorado.....	143.5	142.6	142.5	-0.1	-0.1%	-1.0	-0.7%
27	Georgia.....	406.9	405.3	404.2	-1.1	-0.3%	-2.7	-0.7%
26	New Mexico.....	34.4	34.4	34.2	-0.2	-0.6%	-0.2	-0.6%
25	Texas.....	930.5	928.7	925.1	-3.6	-0.4%	-5.4	-0.6%
24	New York.....	534.4	532.7	531.3	-1.4	-0.3%	-3.1	-0.6%
23	Ohio.....	756.7	756.9	752.9	-4.0	-0.5%	-3.8	-0.5%
22	Idaho.....	61.7	62.0	61.4	-0.6	-1.0%	-0.3	-0.5%
21	Connecticut.....	189.2	188.4	188.3	-0.1	-0.1%	-0.9	-0.5%
20	Massachusetts.....	290.8	290.5	289.6	-0.9	-0.3%	-1.2	-0.4%
19	Florida.....	362.6	361.6	361.2	-0.4	-0.1%	-1.4	-0.4%
18	Arkansas.....	181.8	181.9	181.2	-0.7	-0.4%	-0.6	-0.3%
17	Iowa.....	227.9	227.8	227.2	-0.6	-0.3%	-0.7	-0.3%
16	California.....	1,430.0	1,431.5	1,425.8	-5.7	-0.4%	-4.2	-0.3%
15	Arizona.....	177.3	177.4	177.1	-0.3	-0.2%	-0.2	-0.1%
14	Illinois.....	668.7	668.6	668.2	-0.4	-0.1%	-0.5	-0.1%
13	Nebraska.....	100.6	101.2	100.6	-0.6	-0.6%	0.0	0.0%
12	Vermont.....	35.0	35.0	35.0	0.0	0.0%	0.0	0.0%
11	Virginia.....	273.3	273.4	273.9	0.5	0.2%	0.6	0.2%
10	North Dakota.....	25.7	25.8	25.8	0.0	0.0%	0.1	0.4%
9	Montana.....	20.5	20.4	20.6	0.2	1.0%	0.1	0.5%
8	Missouri.....	283.3	286.3	286.6	0.3	0.1%	3.3	1.2%
7	Wyoming.....	9.7	9.9	9.9	0.0	0.0%	0.2	2.1%
6	Kansas.....	181.4	185.8	185.4	-0.4	-0.2%	4.0	2.2%
5	Alaska.....	12.7	13.0	13.0	0.0	0.0%	0.3	2.4%
N/A	District of Columbia.....	N/A	N/A	N/A	N/A	N/A	N/A	N/A
N/A	Delaware.....	N/A	N/A	N/A	N/A	N/A	N/A	N/A
N/A	Oklahoma.....	N/A	N/A	N/A	N/A	N/A	N/A	N/A
N/A	Hawaii.....	N/A	N/A	N/A	N/A	N/A	N/A	N/A
N/A	Alabama.....	N/A	N/A	N/A	N/A	N/A	N/A	N/A

Department of Labor, BLS and MBG Information Services

www.MBGInfoSvc.com"

All state jobs figures are seasonally adjusted by the BLS.

Financial Activity Job Growth/Decline in the States

Rank	STATE	1,000s of Financial Jobs			One Month		Two Months	
		August	September	October	Sept-Oct Change		Aug-Oct Change	
50	Montana.....	22.0	21.7	21.7	0.0	0.0%	-0.3	-1.4%
49	New York.....	723.0	718.0	714.0	-4.0	-0.6%	-9.0	-1.2%
48	Maine.....	32.7	32.4	32.3	-0.1	-0.3%	-0.4	-1.2%
47	Michigan.....	206.9	205.1	204.5	-0.6	-0.3%	-2.4	-1.2%
46	Nevada.....	62.2	61.9	61.5	-0.4	-0.6%	-0.7	-1.1%
45	Illinois.....	398.3	396.2	394.0	-2.2	-0.6%	-4.3	-1.1%
44	Colorado.....	157.6	156.7	156.1	-0.6	-0.4%	-1.5	-1.0%
43	New Jersey.....	266.2	264.4	263.7	-0.7	-0.3%	-2.5	-0.9%
42	Wyoming.....	11.9	11.8	11.8	0.0	0.0%	-0.1	-0.8%
41	Arizona.....	177.6	177.5	176.2	-1.3	-0.7%	-1.4	-0.8%
40	Tennessee.....	142.0	141.7	140.9	-0.8	-0.6%	-1.1	-0.8%
39	Connecticut.....	143.1	142.7	142.0	-0.7	-0.5%	-1.1	-0.8%
38	Vermont.....	13.1	13.0	13.0	0.0	0.0%	-0.1	-0.8%
37	Alaska.....	14.6	14.5	14.5	0.0	0.0%	-0.1	-0.7%
36	West Virginia.....	29.4	29.4	29.2	-0.2	-0.7%	-0.2	-0.7%
35	Utah.....	73.7	73.1	73.2	0.1	0.1%	-0.5	-0.7%
34	Iowa.....	104.0	103.6	103.3	-0.3	-0.3%	-0.7	-0.7%
33	Florida.....	531.4	529.3	527.9	-1.4	-0.3%	-3.5	-0.7%
32	Washington.....	152.4	151.5	151.4	-0.1	-0.1%	-1.0	-0.7%
31	Delaware.....	45.8	45.7	45.5	-0.2	-0.4%	-0.3	-0.7%
30	South Dakota.....	31.7	31.7	31.5	-0.2	-0.6%	-0.2	-0.6%
29	Idaho.....	32.1	31.8	31.9	0.1	0.3%	-0.2	-0.6%
28	Minnesota.....	182.5	181.5	181.4	-0.1	-0.1%	-1.1	-0.6%
27	Oklahoma.....	84.6	84.8	84.1	-0.7	-0.8%	-0.5	-0.6%
26	Oregon.....	102.6	103.7	102.0	-1.7	-1.6%	-0.6	-0.6%
25	California.....	868.1	865.2	863.1	-2.1	-0.2%	-5.0	-0.6%
24	Massachusetts.....	222.7	221.7	221.5	-0.2	-0.1%	-1.2	-0.5%
23	Virginia.....	192.2	191.4	191.2	-0.2	-0.1%	-1.0	-0.5%
22	North Dakota.....	20.0	19.9	19.9	0.0	0.0%	-0.1	-0.5%
	US Totals.....	8,196	8,180	8,156	-24	-0.3%	-40	-0.5%
21	North Carolina.....	211.7	211.6	210.7	-0.9	-0.4%	-1.0	-0.5%
20	Texas.....	656.0	654.3	653.0	-1.3	-0.2%	-3.0	-0.5%
19	Maryland.....	155.4	155.6	154.7	-0.9	-0.6%	-0.7	-0.5%
18	Arkansas.....	53.9	53.8	53.7	-0.1	-0.2%	-0.2	-0.4%
17	Kansas.....	74.0	73.9	73.8	-0.1	-0.1%	-0.2	-0.3%
16	Georgia.....	226.7	226.3	226.1	-0.2	-0.1%	-0.6	-0.3%
15	New Hampshire.....	39.1	39.0	39.0	0.0	0.0%	-0.1	-0.3%
14	Wisconsin.....	163.7	163.5	163.3	-0.2	-0.1%	-0.4	-0.2%
13	Missouri.....	164.2	163.3	163.8	0.5	0.3%	-0.4	-0.2%
12	Indiana.....	139.2	139.0	138.9	-0.1	-0.1%	-0.3	-0.2%
11	Pennsylvania.....	328.4	326.9	328.1	1.2	0.4%	-0.3	-0.1%
10	Kentucky.....	92.8	92.7	92.9	0.2	0.2%	0.1	0.1%
9	Nebraska.....	70.9	71.4	71.0	-0.4	-0.6%	0.1	0.1%
8	South Carolina.....	108.0	108.4	108.2	-0.2	-0.2%	0.2	0.2%
7	Ohio.....	298.2	298.2	298.8	0.6	0.2%	0.6	0.2%
6	New Mexico.....	34.5	34.5	34.6	0.1	0.3%	0.1	0.3%
5	Alabama.....	100.4	100.5	100.7	0.2	0.2%	0.3	0.3%
	District of Columbia.....	28.3	28.3	28.4	0.1	0.4%	0.1	0.4%
4	Rhode Island.....	32.9	33.1	33.2	0.1	0.3%	0.3	0.9%
3	Louisiana.....	96.5	96.7	98.2	1.5	1.6%	1.7	1.8%
N/A	Mississippi.....	N/A	N/A	N/A	N/A	N/A	N/A	N/A
N/A	Hawaii.....	N/A	N/A	N/A	N/A	N/A	N/A	N/A

Department of Labor, BLS and MBG Information Services

www.MBGInfoSvc.com"

All state jobs figures are seasonally adjusted by the BLS.

Professional & Business Services Jobs in the States

Rank	STATE	1,000s of Prof/Bus Svcs. Jobs			One Month		Two Months	
		August	September	October	Sept-Oct Change		Aug-Oct Change	
50	South Dakota.....	28.7	28.8	27.7	-1.1	-3.8%	-1.0	-3.5%
49	Oregon.....	198.7	197.5	194.7	-2.8	-1.4%	-4.0	-2.0%
48	New Mexico.....	108.4	107.5	106.4	-1.1	-1.0%	-2.0	-1.8%
47	Georgia.....	557.1	552.0	548.5	-3.5	-0.6%	-8.6	-1.5%
46	Colorado.....	354.4	352.3	349.0	-3.3	-0.9%	-5.4	-1.5%
45	Idaho.....	82.0	80.2	80.9	0.7	0.9%	-1.1	-1.3%
44	Rhode Island.....	53.9	53.8	53.2	-0.6	-1.1%	-0.7	-1.3%
43	South Carolina.....	224.6	221.6	221.8	0.2	0.1%	-2.8	-1.2%
42	Arizona.....	392.9	392.3	388.1	-4.2	-1.1%	-4.8	-1.2%
41	Nebraska.....	109.5	109.4	108.2	-1.2	-1.1%	-1.3	-1.2%
40	Delaware.....	59.0	59.1	58.4	-0.7	-1.2%	-0.6	-1.0%
39	Wisconsin.....	275.2	272.6	272.5	-0.1	-0.0%	-2.7	-1.0%
38	North Carolina.....	500.1	496.6	495.4	-1.2	-0.2%	-4.7	-0.9%
37	Vermont.....	22.6	22.5	22.4	-0.1	-0.4%	-0.2	-0.9%
36	Washington.....	352.4	352.3	349.4	-2.9	-0.8%	-3.0	-0.9%
35	Alaska.....	25.5	25.7	25.3	-0.4	-1.6%	-0.2	-0.8%
34	Michigan.....	568.7	565.2	564.3	-0.9	-0.2%	-4.4	-0.8%
33	Louisiana.....	204.1	201.9	202.6	0.7	0.3%	-1.5	-0.7%
32	Kentucky.....	179.3	178.4	178.1	-0.3	-0.2%	-1.2	-0.7%
31	Mississippi.....	96.2	95.6	95.6	0.0	0.0%	-0.6	-0.6%
30	Connecticut.....	205.4	204.5	204.2	-0.3	-0.1%	-1.2	-0.6%
29	New Hampshire.....	68.6	68.3	68.2	-0.1	-0.1%	-0.4	-0.6%
28	Montana.....	40.5	40.3	40.3	0.0	0.0%	-0.2	-0.5%
	US Totals.....	17,854	17,815	17,770	-45	-0.3%	-84	-0.5%
27	Florida.....	1,284.8	1,284.0	1,279.0	-5.0	-0.4%	-5.8	-0.5%
26	California.....	2,274.7	2,272.0	2,265.5	-6.5	-0.3%	-9.2	-0.4%
25	Minnesota.....	322.2	322.0	320.9	-1.1	-0.3%	-1.3	-0.4%
24	Ohio.....	667.2	666.5	664.7	-1.8	-0.3%	-2.5	-0.4%
23	West Virginia.....	61.0	61.0	60.8	-0.2	-0.3%	-0.2	-0.3%
	District of Columbia.....	157.7	156.8	157.2	0.4	0.3%	-0.5	-0.3%
22	New York.....	1,137.4	1,138.8	1,134.9	-3.9	-0.3%	-2.5	-0.2%
21	Alabama.....	225.8	225.2	225.5	0.3	0.1%	-0.3	-0.1%
20	North Dakota.....	30.3	30.5	30.3	-0.2	-0.7%	0.0	0.0%
19	Virginia.....	653.5	653.4	653.6	0.2	0.0%	0.1	0.0%
18	Illinois.....	876.6	877.6	876.8	-0.8	-0.1%	0.2	0.0%
17	Massachusetts.....	489.0	488.1	489.2	1.1	0.2%	0.2	0.0%
16	New Jersey.....	615.7	615.9	616.1	0.2	0.0%	0.4	0.1%
15	Indiana.....	286.0	285.6	286.2	0.6	0.2%	0.2	0.1%
14	Arkansas.....	118.6	118.9	118.7	-0.2	-0.2%	0.1	0.1%
13	Maine.....	55.7	55.5	55.8	0.3	0.5%	0.1	0.2%
12	Nevada.....	153.5	152.4	153.8	1.4	0.9%	0.3	0.2%
11	Pennsylvania.....	712.2	710.4	713.8	3.4	0.5%	1.6	0.2%
10	Missouri.....	337.3	338.0	338.1	0.1	0.0%	0.8	0.2%
9	Iowa.....	120.5	120.6	120.8	0.2	0.2%	0.3	0.2%
8	Maryland.....	405.5	406.5	406.7	0.2	0.0%	1.2	0.3%
7	Kansas.....	147.0	147.6	147.5	-0.1	-0.1%	0.5	0.3%
6	Tennessee.....	316.5	317.4	317.7	0.3	0.1%	1.2	0.4%
5	Utah.....	162.8	162.5	163.8	1.3	0.8%	1.0	0.6%
4	Oklahoma.....	180.8	181.6	182.7	1.1	0.6%	1.9	1.1%
3	Texas.....	1,358.0	1,360.4	1,372.6	12.2	0.9%	14.6	1.1%
2	Wyoming.....	19.1	19.1	19.4	0.3	1.6%	0.3	1.6%
	Hawaii.....	N/A	N/A	N/A	N/A	N/A	N/A	N/A

Department of Labor, BLS and MBG Information Services

www.MBGInfoSvcs.com

All state jobs figures are seasonally adjusted by the BLS.

Private Education/Health Svcs Job Growth/Decline in the States

Rank	STATE	1,000s of Education/Health Svcs.			One Month		Two Months	
		August	September	October	Sept-Oct Change		Aug-Oct Change	
	District of Columbia.....	106.6	104.1	103.2	-0.9	-0.9%	-3.4	-3.2%
50	Idaho.....	76.9	76.2	76.0	-0.2	-0.3%	-0.9	-1.2%
49	Montana.....	61.1	60.5	60.6	0.1	0.2%	-0.5	-0.8%
48	South Carolina.....	209.6	209.6	208.1	-1.5	-0.7%	-1.5	-0.7%
47	Louisiana.....	255.3	253.4	253.5	0.1	0.0%	-1.8	-0.7%
46	Wisconsin.....	409.5	405.8	407.0	1.2	0.3%	-2.5	-0.6%
45	Virginia.....	431.7	431.2	429.7	-1.5	-0.3%	-2.0	-0.5%
44	Kansas.....	173.9	172.9	173.1	0.2	0.1%	-0.8	-0.5%
43	Connecticut.....	295.0	294.9	293.7	-1.2	-0.4%	-1.3	-0.4%
42	West Virginia.....	116.6	116.6	116.1	-0.5	-0.4%	-0.5	-0.4%
41	Oklahoma.....	196.8	196.9	196.1	-0.8	-0.4%	-0.7	-0.4%
40	Vermont.....	58.3	58.2	58.1	-0.1	-0.2%	-0.2	-0.3%
39	Mississippi.....	129.2	128.7	128.8	0.1	0.1%	-0.4	-0.3%
38	Iowa.....	207.0	206.3	206.4	0.1	0.0%	-0.6	-0.3%
37	Hawaii.....	74.5	74.6	74.3	-0.3	-0.4%	-0.2	-0.3%
36	Alaska.....	37.4	37.2	37.3	0.1	0.3%	-0.1	-0.3%
35	Massachusetts.....	640.5	639.8	638.9	-0.9	-0.1%	-1.6	-0.2%
34	Alabama.....	210.1	209.7	209.6	-0.1	-0.0%	-0.5	-0.2%
33	Illinois.....	790.8	791.1	790.1	-1.0	-0.1%	-0.7	-0.1%
32	Ohio.....	803.8	802.9	803.7	0.8	0.1%	-0.1	-0.0%
31	Maine.....	117.6	117.5	117.6	0.1	0.1%	0.0	0.0%
30	Kentucky.....	241.2	240.2	241.2	1.0	0.4%	0.0	0.0%
	US Totals.....	18,997	18,981	19,002	21	0.1%	5	0.0%
29	Pennsylvania.....	1,102.7	1,102.9	1,103.4	0.5	0.0%	0.7	0.1%
28	Washington.....	354.7	355.2	355.2	0.0	0.0%	0.5	0.1%
27	North Dakota.....	51.6	51.4	51.7	0.3	0.6%	0.1	0.2%
26	Indiana.....	403.7	404.8	404.5	-0.3	-0.1%	0.8	0.2%
25	Rhode Island.....	100.2	99.9	100.4	0.5	0.5%	0.2	0.2%
24	Tennessee.....	358.3	358.9	359.1	0.2	0.1%	0.8	0.2%
23	Colorado.....	250.9	251.4	251.5	0.1	0.0%	0.6	0.2%
22	New Mexico.....	116.0	115.7	116.4	0.7	0.6%	0.4	0.3%
21	New Jersey.....	590.9	591.8	593.0	1.2	0.2%	2.1	0.4%
20	Arizona.....	316.3	316.3	317.5	1.2	0.4%	1.2	0.4%
19	Texas.....	1,298.3	1,299.8	1,303.5	3.7	0.3%	5.2	0.4%
18	Maryland.....	385.1	386.2	386.7	0.5	0.1%	1.6	0.4%
17	California.....	1,721.0	1,726.1	1,728.5	2.4	0.1%	7.5	0.4%
16	Utah.....	146.9	147.9	147.6	-0.3	-0.2%	0.7	0.5%
15	Michigan.....	606.8	609.1	609.7	0.6	0.1%	2.9	0.5%
14	Delaware.....	60.1	60.2	60.4	0.2	0.3%	0.3	0.5%
13	Florida.....	1,045.4	1,050.4	1,050.8	0.4	0.0%	5.4	0.5%
12	Oregon.....	223.1	223.8	224.3	0.5	0.2%	1.2	0.5%
11	Arkansas.....	158.2	158.4	159.1	0.7	0.4%	0.9	0.6%
10	Missouri.....	391.3	393.1	393.6	0.5	0.1%	2.3	0.6%
9	South Dakota.....	62.5	62.9	62.9	0.0	0.0%	0.4	0.6%
8	Minnesota.....	438.3	439.8	441.5	1.7	0.4%	3.2	0.7%
7	New York.....	1,632.2	1,640.5	1,645.0	4.5	0.3%	12.8	0.8%
6	North Carolina.....	536.0	537.5	540.8	3.3	0.6%	4.8	0.9%
5	Nebraska.....	135.5	136.5	136.9	0.4	0.3%	1.4	1.0%
4	Nevada.....	95.7	96.2	96.7	0.5	0.5%	1.0	1.0%
3	Georgia.....	466.8	467.0	472.0	5.0	1.1%	5.2	1.1%
2	New Hampshire.....	106.0	106.3	107.3	1.0	0.9%	1.3	1.2%
N/A	Wyoming.....	N/A	N/A	N/A	N/A	N/A	N/A	N/A

Department of Labor, BLS and MBG Information Services

www.MBGInfoSvcs.com"

All state jobs figures are seasonally adjusted by the BLS.

Leisure/Hospitality Job Growth/Decline in the States

Rank	STATE	1,000s of Leisure/Hospitality Jobs			One Month		Two Months	
		August	September	October	Sept-Oct Change		Aug-Oct Change	
50	Alaska.....	32.0	31.6	30.6	-1.0	-3.2%	-1.4	-4.4%
49	South Carolina.....	227.5	221.7	220.4	-1.3	-0.6%	-7.1	-3.1%
48	Mississippi.....	124.9	123.4	121.7	-1.7	-1.4%	-3.2	-2.6%
47	Oregon.....	175.5	174.0	171.9	-2.1	-1.2%	-3.6	-2.1%
46	Arizona.....	273.1	269.6	267.7	-1.9	-0.7%	-5.4	-2.0%
	District of Columbia.....	56.5	56.3	55.5	-0.8	-1.4%	-1.0	-1.8%
45	Wisconsin.....	260.1	258.8	255.6	-3.2	-1.2%	-4.5	-1.7%
44	Kentucky.....	174.8	171.6	171.8	0.2	0.1%	-3.0	-1.7%
43	Idaho.....	63.9	63.0	62.9	-0.1	-0.2%	-1.0	-1.6%
42	North Dakota.....	33.6	33.7	33.1	-0.6	-1.8%	-0.5	-1.5%
41	Utah.....	115.3	115.2	113.9	-1.3	-1.1%	-1.4	-1.2%
40	Hawaii.....	107.8	107.1	106.6	-0.5	-0.5%	-1.2	-1.1%
39	Georgia.....	397.4	396.2	393.9	-2.3	-0.6%	-3.5	-0.9%
38	Indiana.....	285.8	285.1	283.4	-1.7	-0.6%	-2.4	-0.8%
37	Massachusetts.....	302.9	302.1	300.5	-1.6	-0.5%	-2.4	-0.8%
36	New York.....	711.1	708.8	706.3	-2.5	-0.4%	-4.8	-0.7%
35	Michigan.....	404.2	405.5	401.5	-4.0	-1.0%	-2.7	-0.7%
34	Iowa.....	138.6	138.5	137.7	-0.8	-0.6%	-0.9	-0.6%
33	Oklahoma.....	143.5	142.6	142.6	0.0	0.0%	-0.9	-0.6%
32	Louisiana.....	199.5	197.3	198.5	1.2	0.6%	-1.0	-0.5%
31	Delaware.....	40.4	40.2	40.2	0.0	0.0%	-0.2	-0.5%
30	Washington.....	289.3	288.0	287.9	-0.1	-0.0%	-1.4	-0.5%
29	North Carolina.....	403.2	398.8	401.4	2.6	0.7%	-1.8	-0.4%
28	New Jersey.....	337.8	337.9	336.3	-1.6	-0.5%	-1.5	-0.4%
27	Illinois.....	529.5	529.6	527.9	-1.7	-0.3%	-1.6	-0.3%
26	Arkansas.....	100.8	101.0	100.5	-0.5	-0.5%	-0.3	-0.3%
	US Totals.....	13,639	13,618	13,602	-16	-0.1%	-37	-0.3%
25	Colorado.....	275.9	276.9	275.2	-1.7	-0.6%	-0.7	-0.3%
24	Ohio.....	500.6	500.0	499.4	-0.6	-0.1%	-1.2	-0.2%
23	Florida.....	941.9	944.8	939.8	-5.0	-0.5%	-2.1	-0.2%
22	Maine.....	59.6	59.4	59.5	0.1	0.2%	-0.1	-0.2%
21	New Hampshire.....	63.8	63.7	63.7	0.0	0.0%	-0.1	-0.2%
20	New Mexico.....	86.9	86.3	86.8	0.5	0.6%	-0.1	-0.1%
19	Minnesota.....	247.8	246.6	247.6	1.0	0.4%	-0.2	-0.1%
18	Pennsylvania.....	503.6	501.9	503.3	1.4	0.3%	-0.3	-0.1%
17	Texas.....	1,024.4	1,024.3	1,023.8	-0.5	-0.0%	-0.6	-0.1%
16	Virginia.....	345.2	345.6	345.2	-0.4	-0.1%	0.0	0.0%
15	Alabama.....	174.6	174.8	174.6	-0.2	-0.1%	0.0	0.0%
14	Connecticut.....	138.0	137.3	138.0	0.7	0.5%	0.0	0.0%
13	Tennessee.....	270.9	271.3	271.1	-0.2	-0.1%	0.2	0.1%
12	California.....	1,562.8	1,563.2	1,564.1	0.9	0.1%	1.3	0.1%
11	Kansas.....	115.2	115.3	115.3	0.0	0.0%	0.1	0.1%
10	Missouri.....	278.8	277.6	279.3	1.7	0.6%	0.5	0.2%
9	Nevada.....	337.7	337.4	338.5	1.1	0.3%	0.8	0.2%
8	Nebraska.....	83.9	85.0	84.1	-0.9	-1.1%	0.2	0.2%
7	Rhode Island.....	50.3	50.5	50.5	0.0	0.0%	0.2	0.4%
6	Vermont.....	33.0	32.5	33.3	0.8	2.5%	0.3	0.9%
5	Maryland.....	239.9	239.3	242.1	2.8	1.2%	2.2	0.9%
4	South Dakota.....	42.9	42.9	43.4	0.5	1.2%	0.5	1.2%
3	Montana.....	59.6	59.9	60.4	0.5	0.8%	0.8	1.3%
2	West Virginia.....	71.5	73.0	73.2	0.2	0.3%	1.7	2.4%
1	Wyoming.....	34.1	34.7	35.1	0.4	1.2%	1.0	2.9%

Department of Labor, BLS and MBG Information Services

www.MBGInfoSvc.com"

All state jobs figures are seasonally adjusted by the BLS.

Government Job Growth/Decline in the States

Rank	STATE	1,000s of Government Jobs			One Month		Two Months	
		August	September	October	Sept-Oct Change		Aug-Oct Change	
50	Michigan.....	663.4	646.0	642.8	-3.2	-0.5%	-20.6	-3.1%
49	South Dakota.....	77.8	76.6	75.7	-0.9	-1.2%	-2.1	-2.7%
48	Rhode Island.....	63.3	63.2	62.2	-1.0	-1.6%	-1.1	-1.7%
	District of Columbia.....	238.9	232.7	235.0	2.3	1.0%	-3.9	-1.6%
47	South Carolina.....	353.0	347.8	347.3	-0.5	-0.1%	-5.7	-1.6%
46	Louisiana.....	370.5	364.6	364.8	0.2	0.1%	-5.7	-1.5%
45	Maryland.....	489.6	486.2	485.0	-1.2	-0.2%	-4.6	-0.9%
44	Mississippi.....	243.4	242.1	241.4	-0.7	-0.3%	-2.0	-0.8%
43	Arizona.....	438.0	434.7	434.8	0.1	0.0%	-3.2	-0.7%
42	Oregon.....	300.6	299.9	298.7	-1.2	-0.4%	-1.9	-0.6%
41	Indiana.....	438.7	434.6	436.2	1.6	0.4%	-2.5	-0.6%
40	Wisconsin.....	427.5	424.7	425.4	0.7	0.2%	-2.1	-0.5%
39	Utah.....	212.0	210.9	211.1	0.2	0.1%	-0.9	-0.4%
38	North Carolina.....	708.0	705.8	705.0	-0.8	-0.1%	-3.0	-0.4%
37	Washington.....	547.3	541.1	545.4	4.3	0.8%	-1.9	-0.3%
36	Montana.....	89.0	89.2	88.7	-0.5	-0.6%	-0.3	-0.3%
35	Oklahoma.....	318.6	317.1	317.8	0.7	0.2%	-0.8	-0.3%
34	Tennessee.....	426.3	424.9	425.4	0.5	0.1%	-0.9	-0.2%
33	Florida.....	1,141.2	1,140.8	1,139.1	-1.7	-0.1%	-2.1	-0.2%
32	Alabama.....	382.4	381.0	381.7	0.7	0.2%	-0.7	-0.2%
31	Hawaii.....	126.4	125.1	126.2	1.1	0.9%	-0.2	-0.2%
30	Nevada.....	163.9	163.3	163.7	0.4	0.2%	-0.2	-0.1%
29	California.....	2,533.7	2,530.4	2,531.6	1.2	0.0%	-2.1	-0.1%
	US Totals.....	22,514	22,473	22,496	23	0.1%	-18	-0.1%
28	New York.....	1,519.8	1,518.9	1,519.4	0.5	0.0%	-0.4	-0.0%
27	New Jersey.....	646.6	646.5	646.6	0.1	0.0%	0.0	0.0%
26	North Dakota.....	75.8	75.3	75.8	0.5	0.7%	0.0	0.0%
25	Georgia.....	676.5	673.5	676.9	3.4	0.5%	0.4	0.1%
24	Kentucky.....	338.0	335.5	338.2	2.7	0.8%	0.2	0.1%
23	Kansas.....	266.0	262.6	266.3	3.7	1.4%	0.3	0.1%
22	Iowa.....	252.9	253.3	253.2	-0.1	-0.0%	0.3	0.1%
21	Alaska.....	82.7	82.5	82.8	0.3	0.4%	0.1	0.1%
20	West Virginia.....	145.8	145.5	146.0	0.5	0.3%	0.2	0.1%
19	Vermont.....	54.0	54.1	54.1	0.0	0.0%	0.1	0.2%
18	Pennsylvania.....	747.4	748.2	748.9	0.7	0.1%	1.5	0.2%
17	Virginia.....	698.5	700.5	700.3	-0.2	-0.0%	1.8	0.3%
16	Connecticut.....	251.6	252.7	252.3	-0.4	-0.2%	0.7	0.3%
15	Colorado.....	385.4	387.6	386.6	-1.0	-0.3%	1.2	0.3%
14	New Hampshire.....	94.2	96.2	94.5	-1.7	-1.8%	0.3	0.3%
13	Delaware.....	62.1	62.2	62.3	0.1	0.2%	0.2	0.3%
12	Ohio.....	794.5	795.5	797.3	1.8	0.2%	2.8	0.4%
11	Minnesota.....	419.9	420.7	421.4	0.7	0.2%	1.5	0.4%
10	Nebraska.....	163.5	164.1	164.1	0.0	0.0%	0.6	0.4%
9	Texas.....	1,751.9	1,749.9	1,758.8	8.9	0.5%	6.9	0.4%
8	Illinois.....	846.8	852.9	850.2	-2.7	-0.3%	3.4	0.4%
7	New Mexico.....	197.5	197.8	198.4	0.6	0.3%	0.9	0.5%
6	Massachusetts.....	435.8	437.2	437.8	0.6	0.1%	2.0	0.5%
5	Idaho.....	122.7	122.0	123.4	1.4	1.1%	0.7	0.6%
4	Arkansas.....	210.1	210.9	211.4	0.5	0.2%	1.3	0.6%
3	Maine.....	103.5	103.7	104.4	0.7	0.7%	0.9	0.9%
2	Missouri.....	442.8	444.0	447.5	3.5	0.8%	4.7	1.1%
1	Wyoming.....	68.4	70.5	70.1	-0.4	-0.6%	1.7	2.5%

Department of Labor, BLS and MBG Information Services

www.MBGInfoSvc.com"

All state jobs figures are seasonally adjusted by the BLS.

Job Losses Spread To Debt-Dependent Sectors As Well As Import Competing

The Private Sector Lost -1.3 million jobs yr/yr despite 512,000 new jobs in private Health/Education

Industry: Nonfarm Jobs (1,000)	October 2007	August 2008	Sept. 2008	October 2008	New Job Growth/Loss One Month	10-'08/10-'07
Total nonfarm.....	137,977	137,423	137,139	136,899	-240	-1078
Total private.....	115,715	114,909	114,666	114,403	-263	-1312
Total private supervisory.....	20,354	20,078	20,036	20,063	27	-291
Total private non-supervisory.....	95,361	94,831	94,630	94,340	-290	-1021
Goods-producing.....	22,101	21,367	21,284	21,152	-132	-949
Goods-producing supervisory.....	5,756	5,625	5,633	5,646	13	-110
Goods-producing non-supervisory.....	16,345	15,742	15,651	15,506	-145	-839
Service-providing.....	115,876	116,056	115,855	115,747	-108	-129
Private Service-providing.....	93,614	93,542	93,382	93,251	-131	-363
Private Services supervisory.....	14,598	14,453	14,403	14,417	14	-181
Private Services non-supervisory.....	79,016	79,089	78,979	78,834	-145	-182
Natural resources and mining.....	727	788	796	803	7	76
Logging.....	59.1	58.1	58.7	58.7	0	-0
Mining.....	667.8	729.6	737.5	744	7	76
Oil and gas extraction.....	148.9	164.1	165.5	165.5	0	17
Mining, except oil and gas.....	226.9	233.8	234.2	234.9	1	8
Coal mining.....	78.1	83.5	84.4	85.2	1	7
Support activities for mining.....	292	331.7	337.8	343.6	6	52
Construction.....	7,577	7,153	7,118	7,069	-49	-508
Construction of buildings.....	1,736.6	1,612.8	1,595.1	1,582.9	-12	-154
Residential building.....	929.2	831.9	821.8	813.7	-8	-116
Nonresidential building.....	807.4	780.9	773.3	769.2	-4	-38
Heavy & civil engineering construction.....	999.5	952.8	950.4	946.1	-4	-53
Specialty trade contractors.....	4,841.3	4,587.8	4,572.2	4,540.2	-32	-301
Residential specialty contractor.....	2,263.2	2,055.6	2,051.6	2,032.8	-19	-230
Nonresidential specialty contractor.....	2,578.1	2,532.2	2,520.6	2,507.4	-13	-71
Manufacturing.....	13,797	13,426	13,370	13,280	-90	-517
Supervisory workers.....	3,863	3,790	3,789	3,795	6	-68
Non-supervisory workers.....	9,934	9,636	9,581	9,485	-96	-449
Durable goods.....	8,761	8,482	8,442	8,367	-75	-394
Supervisory workers.....	2,529	2,502	2,504	2,509	5	-20
Non-supervisory workers.....	6,232	5,980	5,938	5,858	-80	-374
Wood products.....	511.8	467.6	462.7	456.1	-7	-56
Nonmetallic mineral products.....	500.9	475.8	472.1	472.5	0	-28
Primary metals.....	451.5	443.0	444.6	443.5	-1	-8
Fabricated metal products.....	1,568.0	1,534.3	1,525.7	1,515.1	-11	-53
Machinery.....	1,189.0	1,193.0	1,189.8	1,187.7	-2	-1
Computer and electronic products.....	1,256.5	1,247.4	1,245.4	1,241.2	-4	-15
Computer and peripheral equipment.....	185.1	185.4	185.6	185.8	0	1
Communications equipment.....	128.1	131.2	131.4	131.5	0	3
Semiconductors and electronic components...	435.8	423.4	422.4	420.2	-2	-16
Electronic instruments.....	441.9	444.7	444.2	442.5	-2	1
Electrical equipment and appliances.....	427.2	419.4	416.8	416.2	-1	-11
Transportation equipment.....	1,689.3	1,584.0	1,573.0	1,532.9	-40	-156
Motor vehicles and parts.....	974.1	866.2	851.7	842.6	-9	-132

Job Losses Spread To Debt-Dependent Sectors As Well As Import Competing

The Private Sector Lost -1.3 million jobs yr/yr despite 512,000 new jobs in private Health/Education

Industry: Nonfarm Jobs (1,000)	October 2007	August 2008	Sept. 2008	October 2008	New Job Growth/Loss One Month	10-'08/10-'07
Furniture and related products.....	528.3	487.4	481.8	471.4	-10	-57
Miscellaneous manufacturing.....	638.2	630.1	629.9	630.0	0	-8
Nondurable goods.....	5,036	4,944	4,928	4,913	-15	-123
Supervisory workers.....	1,334	1,288	1,285	1,286	1	-48
Non-supervisory workers.....	3,702	3,656	3,643	3,627	-16	-75
Food manufacturing.....	1,478.6	1,474.0	1,475.3	1,477.2	2	-1
Beverages and tobacco products.....	195.2	191.3	191.2	189.8	-1	-5
Textile mills.....	164.9	150.6	149.2	147.9	-1	-17
Textile product mills.....	155.9	147.9	148.3	147.8	-1	-8
Apparel.....	206.8	196.1	193.4	189.4	-4	-17
Leather and allied products.....	33.7	35.1	35.1	35	-0	1
Paper and paper products.....	459.2	453.4	451	451.7	1	-8
Printing and related support activities.....	622.2	599.2	595.3	591.4	-4	-31
Petroleum and coal products.....	112.6	114.1	113.8	113.5	-0	1
Chemicals.....	860.7	855.4	852.6	852.9	0	-8
Plastics and rubber products.....	745.9	726.4	722.8	716.7	-6	-29
Trade, transportation, and utilities.....	26,644	26,346	26,278	26,211	-67	-433
Wholesale trade.....	6,069.8	6,007.1	6,005.2	5,983.7	-22	-86
Durable goods.....	3,147.4	3,084.9	3,082.2	3,064.1	-18	-83
Nondurable goods.....	2,086.5	2,075.2	2,071.7	2,070.0	-2	-17
Electronic markets; agents/brokers.....	835.9	847	851.3	849.6	-2	14
Retail trade.....	15,469.1	15,274.7	15,229.9	15,191.8	-38	-277
Motor vehicle and parts dealers.....	1,911.9	1,853.2	1,842.0	1,820.6	-21	-91
Automobile dealers.....	1,247.4	1,189.6	1,180.3	1,160.0	-20	-87
Furniture and home furnishings stores.....	577.3	566.4	563.5	560.3	-3	-17
Electronics and appliance stores.....	537.1	535.3	532.6	532.4	-0	-5
Building material/garden supply stores.....	1,285.4	1,237.0	1,237.3	1,235.0	-2	-50
Food and beverage stores.....	2,859.6	2,871.5	2,863.8	2,870.0	6	10
Health and personal care stores.....	991	985.1	985.5	983.6	-2	-7
Gasoline stations.....	862	839.8	833.9	835.6	2	-26
Clothing and accessories stores.....	1,500.9	1,495.8	1,494.1	1,493.4	-1	-8
Sporting goods, hobby, book, music stores.....	664	659.5	660.5	664.6	4	1
General merchandise stores.....	2,975.8	2,941.1	2,926.9	2,908.4	-19	-67
Department stores.....	1,568.5	1,507.0	1,493.8	1,475.8	-18	-93
Miscellaneous store retailers.....	869	856.4	856.6	857	0	-12
Nonstore retailers.....	435.1	433.6	433.2	430.9	-2	-4
Transportation and warehousing.....	4,548.7	4,505.1	4,481.1	4,471.9	-9	-77
Air transportation.....	495.2	490.9	486.3	483.8	-3	-11
Rail transportation.....	234	230.6	232.2	232.2	0	-2
Water transportation.....	64.9	60.7	60.1	59.7	-0	-5
Truck transportation.....	1,433.6	1,400.1	1,390.5	1,385.9	-5	-48
Transit & ground passenger transport.....	417.4	416.5	409.2	410.2	1	-7
Pipeline transportation.....	40.3	43	43.4	43.8	0	4
Scenic and sightseeing transport.....	30.3	30.9	31	31.8	1	2
Support activities for transport.....	589.9	590.8	590.3	590.4	0	1
Couriers and messengers.....	577.9	585.8	583.6	582.1	-2	4

Job Losses Spread To Debt-Dependent Sectors As Well As Import Competing

The Private Sector Lost -1.3 million jobs yr/yr despite 512,000 new jobs in private Health/Education

Industry: Nonfarm Jobs (1,000)	October 2007	August 2008	Sept. 2008	October 2008	New Job Growth/Loss One Month	10-'08/10-'07
Warehousing and storage.....	665.2	655.8	654.5	652	-3	-13
Utilities.....	556.1	559.2	561.4	563.2	2	7
Information.....	3,027	2,984	2,981	2,981	0	-46
Publishing industries, except Internet.....	894.6	870.4	868.7	867.2	-2	-27
Motion picture and sound recording.....	380.5	379.4	381.3	386.3	5	6
Broadcasting, except Internet.....	324.8	318.4	317.6	319.5	2	-5
Telecommunications.....	1,023.6	1,016.0	1,014.1	1,007.3	-7	-16
Data processing, hosting and related.....	273.2	268	267.9	267.8	-0	-5
Other information services.....	130	131.7	131.8	132.9	1	3
Financial activities.....	8,283	8,196	8,180	8,156	-24	-127
Finance and insurance.....	6,124.5	6,075.1	6,064.7	6,050.2	-15	-74
Monetary authorities - central bank.....	20.8	20.8	20.8	20.4	-0	-0
Credit intermediation and related.....	2,844.8	2,784.7	2,788.0	2,776.4	-12	-68
Depository credit intermediation.....	1,829.3	1,813.2	1,810.8	1,808.0	-3	-21
Commercial banking.....	1,350.1	1,339.4	1,338.4	1,336.9	-2	-13
Securities, commodity, investments.....	855	860.9	851.6	846	-6	-9
Insurance carriers, related activities.....	2,315.3	2,320.3	2,316.0	2,318.5	3	3
Funds, trusts, other financial vehicles.....	88.6	88.4	88.3	88.9	1	0
Real estate and rental/leasing.....	2,158.6	2,121.3	2,115.3	2,106.2	-9	-52
Real estate.....	1,489.1	1,465.6	1,461.7	1,459.7	-2	-29
Rental and leasing services.....	639.7	623.8	621.5	614.7	-7	-25
Lessors of nonfinancial intangibles.....	29.8	31.9	32.1	31.8	-0	2
Professional and business services.....	18,070	17,854	17,815	17,770	-45	-300
Professional and technical services.....	7,759.3	7,859.5	7,865.4	7,877.9	13	119
Legal services.....	1,179.7	1,166.6	1,165.0	1,163.9	-1	-16
Accounting and bookkeeping.....	971.3	977.7	976.3	977.4	1	6
Architectural and engineering.....	1,451.1	1,464.2	1,458.1	1,457.7	-0	7
Computer systems design and related.....	1,380.0	1,424.5	1,429.0	1,434.5	6	55
Management and technical consulting.....	974.8	1,019.8	1,028.2	1,028.5	0	54
Management of companies and enterprises.....	1,860.9	1,832.1	1,828.3	1,827.8	-1	-33
Administrative and waste services.....	8,449.6	8,162.7	8,121.1	8,064.3	-57	-385
Administrative and support services.....	8,092.2	7,793.5	7,752.1	7,692.4	-60	-400
Employment services.....	3,567.7	3,285.8	3,250.9	3,200.1	-51	-368
Temporary help services.....	2,592.0	2,353.5	2,325.3	2,291.7	-34	-300
Business support services.....	798.5	785.6	786.2	787.2	1	-11
Services to buildings and dwellings.....	1,866.3	1,861.8	1,858.3	1,853.1	-5	-13
Waste management and remediation.....	357.4	369.2	369	371.9	3	15
Education and health services.....	18,490	18,997	18,981	19,002	21	512
Educational services.....	2,974.9	3,126.6	3,079.5	3,068.3	-11	93
Health care and social assistance.....	15,515.1	15,870.8	15,901.9	15,933.8	32	419
Health care.....	13,060.1	13,363.4	13,381.9	13,407.9	26	348
Ambulatory health care services.....	5,547.3	5,703.8	5,718.0	5,729.8	12	183
Offices of physicians.....	2,226.1	2,282.7	2,288.8	2,294.8	6	69
Outpatient care centers.....	511.4	522.2	518.6	521.5	3	10
Home health care services.....	930.3	963.4	967.1	969.5	2	39
Hospitals.....	4,549.7	4,669.1	4,676.4	4,686.5	10	137

Job Losses Spread To Debt-Dependent Sectors As Well As Import Competing

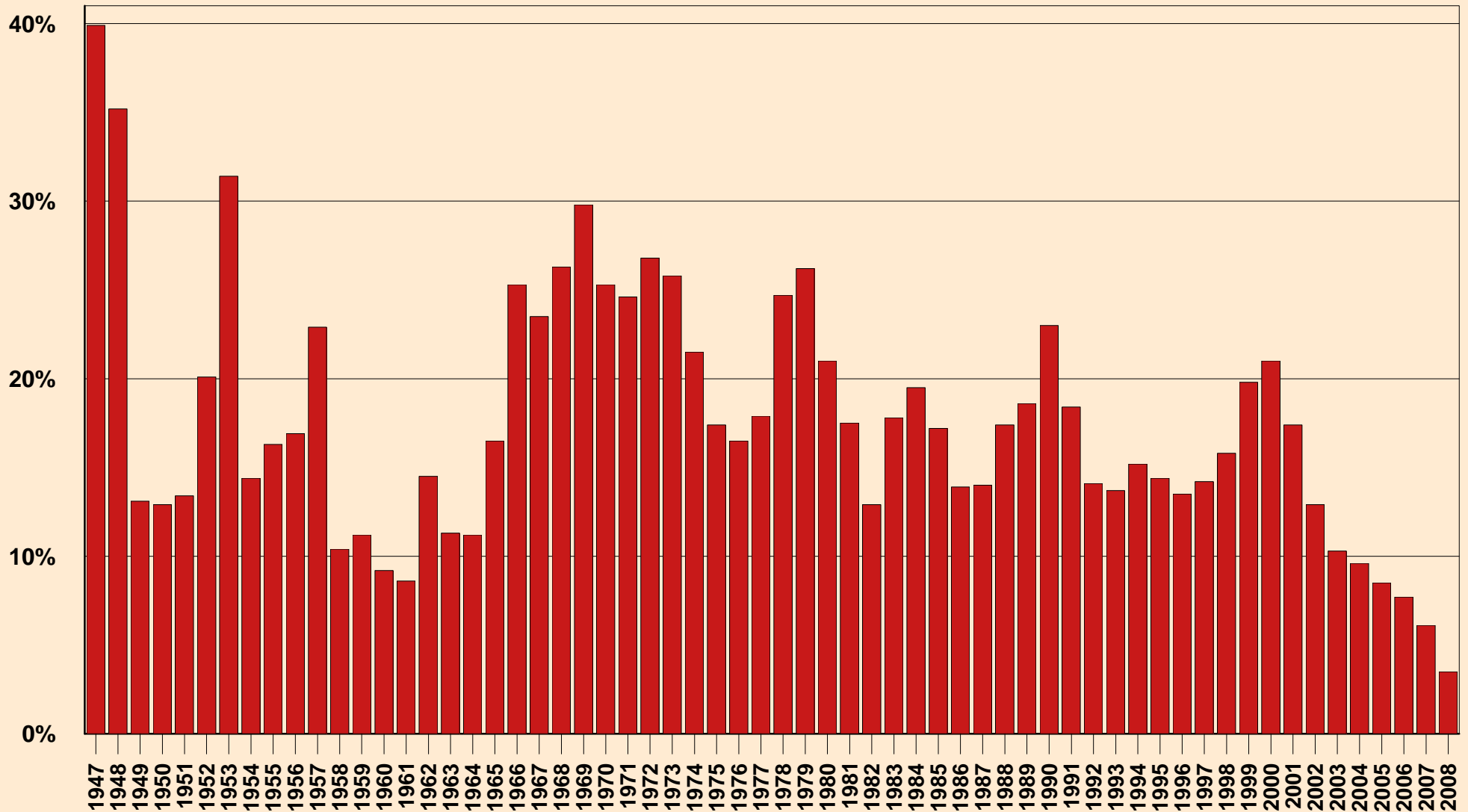
The Private Sector Lost -1.3 million jobs yr/yr despite 512,000 new jobs in private Health/Education

Industry: Nonfarm Jobs (1,000)	October 2007	August 2008	Sept. 2008	October 2008	New Job Growth/Loss One Month	10-'08/10-'07
Nursing and residential care facilities.....	2,963.1	2,990.5	2,987.5	2,991.6	4	29
Nursing care facilities.....	1,603.1	1,607.4	1,602.8	1,605.7	3	3
Social assistance.....	2,455.0	2,507.4	2,520.0	2,525.9	6	71
Child day care services.....	853.3	850.5	860.1	860	-0	7
Leisure and hospitality.....	13,604	13,639	13,618	13,602	-16	-2
Arts, entertainment, and recreation.....	1,996.4	2,004.0	1,997.8	2,001.8	4	5
Performing arts and spectator sports.....	419	432.9	427.5	429.2	2	10
Museums, historical sites, zoos & parks.....	131.9	131.7	130.2	129.4	-1	-3
Amusements, gambling, & recreation.....	1,445.5	1,439.4	1,440.1	1,443.2	3	-2
Accommodations and food services.....	11,607.5	11,634.6	11,619.7	11,600.3	-19	-7
Accommodations.....	1,863.6	1,824.9	1,820.2	1,812.1	-8	-52
Food services and drinking places.....	9,743.9	9,809.7	9,799.5	9,788.2	-11	44
Other services.....	5,496	5,526	5,529	5,529	0	33
Repair and maintenance.....	1,260.1	1,233.9	1,235.1	1,232.3	-3	-28
Personal and laundry services.....	1,303.4	1,318.5	1,320.2	1,319.6	-1	16
Membership assocs & organizations.....	2,932.8	2,973.6	2,974.1	2,976.6	3	44
Government.....	22,262	22,514	22,473	22,496	23	234
Federal.....	2,722	2,748	2,750	2,756	6	34
Federal, except U.S. Postal Service.....	1,963.5	2,025.2	2,031.4	2,038.8	7	75
U.S. Postal Service.....	758.3	722.4	718.7	716.7	-2	-42
State government.....	5,138	5,210	5,197	5,193	-4	55
State government education.....	2,325.9	2,378.8	2,371.5	2,367.0	-5	41
State government, ex education.....	2,812.4	2,831.2	2,825.7	2,826.1	0	14
Local government.....	14,402	14,556	14,526	14,547	21	145
Local government education.....	7,994.6	8,058.6	8,032.2	8,055.4	23	61
Local government, ex education.....	6,406.9	6,497.4	6,494.0	6,491.3	-3	84

U.S. Department of Labor, BLS and MBG Information Services "www.mbginfosvcs.com"

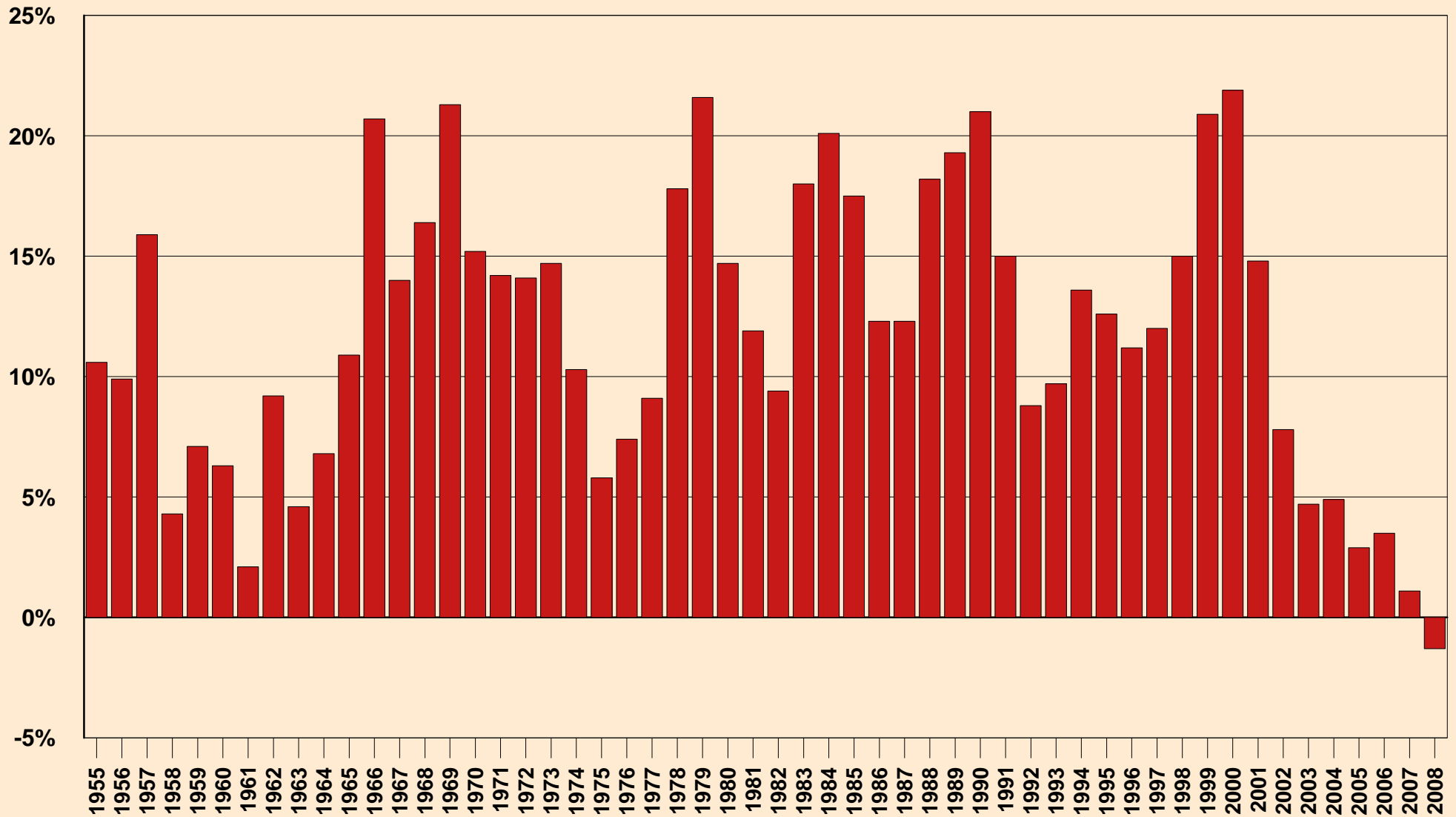
Worst 8-Year Jobs Record Since the 1930s

% Change in Total Nonfarm Business Jobs: 8 years ending in October of each year



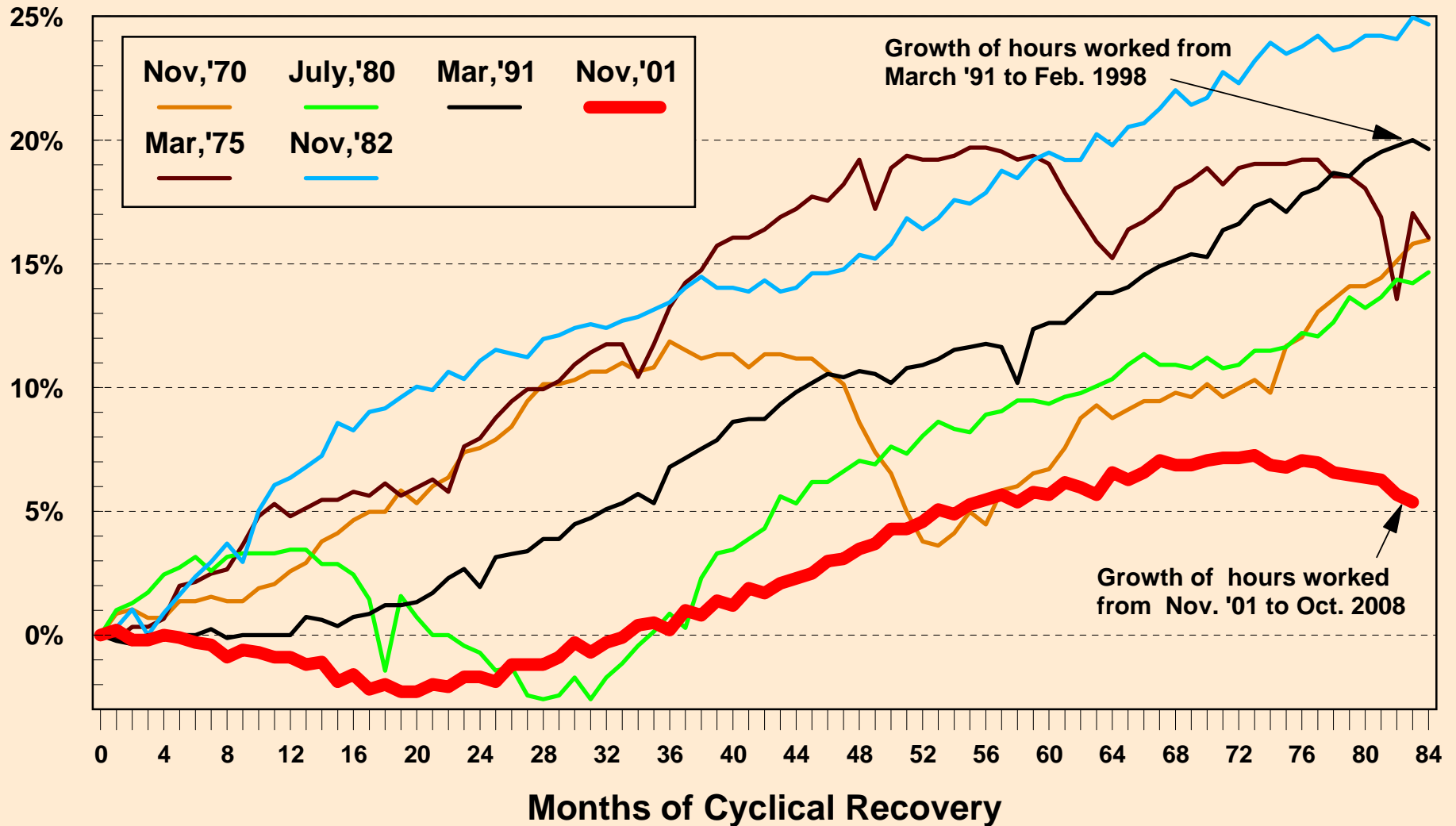
First 8-Year Loss in Hours Worked Since the 1930s

% Change in Total Hours Worked in Non-Farm Business: 8 years ending in Q3 of each year



Every past cycle since the Depression gained more than twice the percent of hours worked as during the current 6 years 11 months

% Growth of Aggregate Hours Worked in Private Sector From End of Recession: Monthly Levels



2001-'08: By far, the Worst Loss on Record of Manufacturing Hours Worked

% Change of Aggregate Manufacturing Hours Worked From End of Recession

